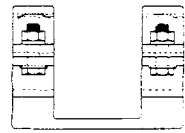


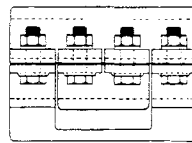
POWER CONNECTORS

BUS SUPPORT FITTINGS PICTORIAL INDEX

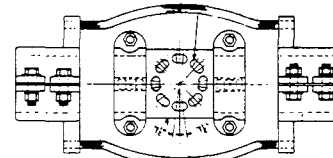
SECTION Fa



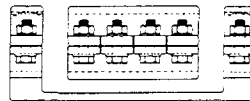
TYPE G (Page Fa-1)



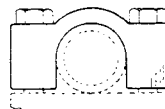
TYPE GC (Page Fa-2)



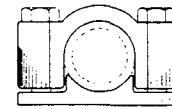
TYPE GCE (Page Fa-3)



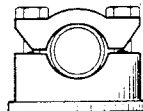
TYPE GCS (Page Fa-4)



TYPE TC-31 & TC-51 (Page Fa-5)



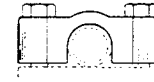
TYPE TR-31 & TR-51 (Page Fa-6)



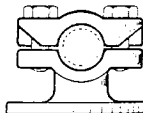
TYPE AP-3 & AP-5 (Page Fa-7)



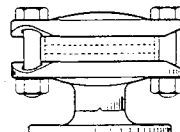
TYPE TC-32 & TC-52 (Page Fa-9)



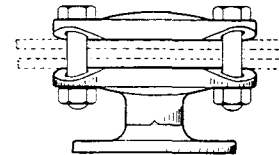
TYPE TR-32 & TR-52 (Page Fa-6)



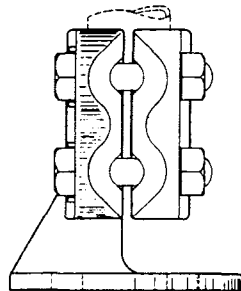
TYPE AT-3 & AT-5 (Page Fa-7)



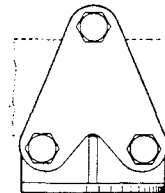
TYPE AFA-3 & AFA-5 (Page Fa-9)



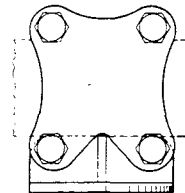
TYPE AFH-3 & AFH-5 (Page Fa-9)



TYPE VT-3 & VT-5 (Page Fa-8)



TYPE VFA-3 & VFA-5 (Page Fa-10)



TYPE VFH-3 & VFH-5 (Page Fa-10)

Fa-Bus Support

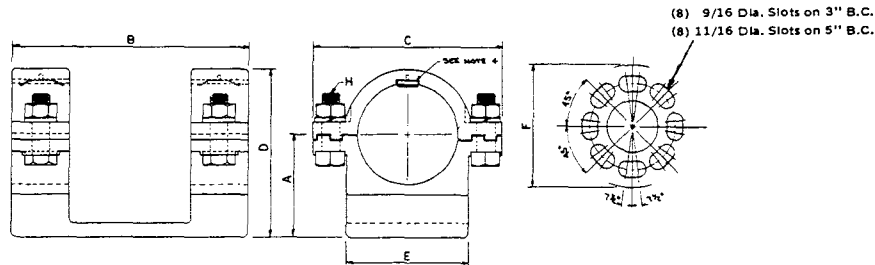
ROYAL SWITCHGEAR MANUFACTURING CO.

3995 Pine Lane SE • Bessemer, AL 35023 • (205) 426-4090 • FAX (205) 426-4095

POWER CONNECTORS **Fa-1**

BUS SUPPORT FITTING

TYPE G



3" BOLT CIRCLE

| CAT. NO. | IPS | A | B | C | D | E | F | H |
|----------|-------|-------|-------|-------|---------|-------|-------|-----|
| G-07-3 | 3/4 | 2 | 7-3/4 | 3-3/8 | 3 | 1-1/2 | 4-1/4 | 1/2 |
| G-10-3 | 1 | 2 | 7-3/4 | 3-3/4 | 3-1/4 | 1-1/2 | 4-1/4 | 1/2 |
| G-12-3 | 1-1/4 | 2-1/4 | 8-3/4 | 4-1/2 | 3-9/16 | 1-1/2 | 4-1/4 | 1/2 |
| G-15-3 | 1-1/2 | 2-1/2 | 8-3/4 | 4-1/2 | 3-15/16 | 1-1/2 | 4-1/4 | 1/2 |
| G-20-3 | 2 | 2-3/4 | 8-3/4 | 5 | 4-3/8 | 1-1/2 | 4-1/4 | 1/2 |
| G-25-3 | 2-1/2 | 3-1/8 | 8-1/4 | 6-5/8 | 5-1/8 | 4-1/4 | 4-1/4 | 5/8 |
| G-30-3 | 3 | 3-5/8 | 8-1/4 | 6-5/8 | 5-7/8 | 4-1/4 | 4-1/4 | 5/8 |
| G-35-3 | 3-1/2 | 4 | 8-1/4 | 7-1/8 | 6-1/2 | 4-1/4 | 4-1/4 | 5/8 |
| G-40-3 | 4 | 4-1/2 | 8-1/4 | 7-1/2 | 7-1/4 | 4-1/4 | 4-1/4 | 5/8 |
| G-50-3 | 5 | 5 | 8-1/4 | 8-7/8 | 8-5/16 | 4-1/4 | 4-1/4 | 5/8 |
| G-60-3 | 6 | 5-1/2 | 8-1/4 | 9-7/8 | 9-5/16 | 4-1/4 | 4-1/4 | 5/8 |

5" BOLT CIRCLE

| CAT. NO. | IPS | A | B | C | D | E | F | H |
|----------|-------|-------|--------|-------|---------|-------|-------|-----|
| G-07-5 | 3/4 | 2-1/4 | 10 | 3-3/8 | 3-1/4 | 1-1/2 | 6-1/4 | 1/2 |
| G-10-5 | 1 | 2-1/4 | 10 | 3-3/4 | 3-1/2 | 1-1/2 | 6-1/4 | 1/2 |
| G-12-5 | 1-1/4 | 2-3/8 | 11 | 4-1/2 | 3-11/16 | 1-1/2 | 6-1/4 | 1/2 |
| G-15-5 | 1-1/2 | 2-1/2 | 11 | 4-1/2 | 3-15/16 | 1-1/2 | 6-1/4 | 1/2 |
| G-20-5 | 2 | 2-3/4 | 11 | 5 | 4-3/8 | 1-1/2 | 6-1/4 | 1/2 |
| G-25-5 | 2-1/2 | 3-1/8 | 10-3/4 | 6-5/8 | 5-1/8 | 4-1/4 | 6-1/4 | 5/8 |
| G-30-5 | 3 | 3-5/8 | 10-3/4 | 6-5/8 | 5-7/8 | 4-1/4 | 6-1/4 | 5/8 |
| G-35-5 | 3-1/2 | 4 | 10-3/4 | 7-1/8 | 6-1/2 | 4-1/4 | 6-1/4 | 5/8 |
| G-40-5 | 4 | 4-1/2 | 10-3/4 | 7-1/2 | 7-1/4 | 4-1/4 | 6-1/4 | 5/8 |
| G-50-5 | 5 | 5 | 10-3/4 | 8-7/8 | 8-5/16 | 4-1/4 | 6-1/4 | 5/8 |
| G-60-5 | 6 | 5-1/2 | 10-3/4 | 9-7/8 | 9-5/16 | 4-1/4 | 6-1/4 | 5/8 |

RECOMMENDED TIGHTENING TORQUE

No. 2024 Alum. Bolts With Alumilite Finish & No-Oxide Coating

| BOLT DIA. | FT. LB TORQUE |
|-----------|---------------|
| 1/2 | 30 |
| 5/8 | 50 |

NOTES:

- Supplied with Cap Screws for Upright Mounting unless otherwise specified. (Galv.)
- For Base MTG on Cap and Pin Insulator add Suffix-B for Bolts, Nuts and Lockwashers. (Galv.) Example: G-10-3-B
- Caps are reversible for tight or slip fit.
- Anti-chatter Springs available by adding Suffix-AC. Example: G-10-3-AC
- One Wrench Installation.

Fa-Bus Support

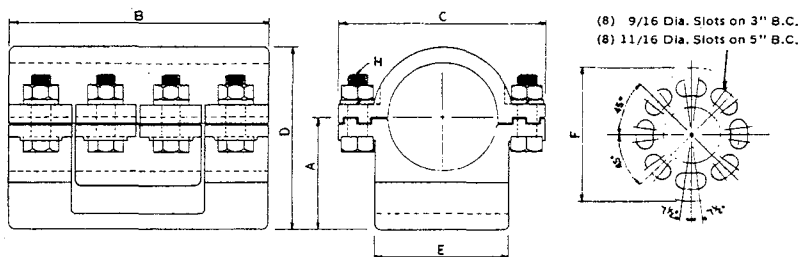
ROYAL SWITCHGEAR MANUFACTURING CO.

3995 Pine Lane SE • Bessemer, AL 35023 • (205) 426-4090 • FAX (205) 426-4095

Fa-2 POWER CONNECTORS

BUS SUPPORT COUPLER

TYPE GC



3" BOLT CIRCLE

| CAT. NO. | IPS | A | B | C | D | E | F | H |
|----------|-------|-------|-------|-------|---------|-------|-------|-----|
| GC-07-3 | 3/4 | 2 | 7-3/4 | 3-3/8 | 3 | 1-1/2 | 4-1/4 | 1/2 |
| GC-10-3 | 1 | 2 | 7-3/4 | 3-3/4 | 3-1/4 | 1-1/2 | 4-1/4 | 1/2 |
| GC-12-3 | 1-1/4 | 2-1/4 | 8-3/4 | 4-1/2 | 3-9/16 | 1-1/2 | 4-1/4 | 1/2 |
| GC-15-3 | 1-1/2 | 2-1/2 | 8-3/4 | 4-1/2 | 3-15/16 | 1-1/2 | 4-1/4 | 1/2 |
| GC-20-3 | 2 | 2-3/4 | 8-3/4 | 5 | 4-3/8 | 1-1/2 | 4-1/4 | 1/2 |
| GC-25-3 | 2-1/2 | 3-1/8 | 8-1/4 | 6-5/8 | 5-1/8 | 4-1/4 | 4-1/4 | 5/8 |
| GC-30-3 | 3 | 3-5/8 | 8-1/4 | 6-5/8 | 5-7/8 | 4-1/4 | 4-1/4 | 5/8 |
| GC-35-3 | 3-1/2 | 4 | 8-1/4 | 7-1/8 | 6-1/2 | 4-1/4 | 4-1/4 | 5/8 |
| GC-40-3 | 4 | 4-1/2 | 8-1/4 | 7-1/2 | 7-1/4 | 4-1/4 | 4-1/4 | 5/8 |
| GC-50-3 | 5 | 5 | 12 | 8-7/8 | 8-5/16 | 4-1/4 | 4-1/4 | 5/8 |
| GC-60-3 | 6 | 5-1/2 | 12 | 9-7/8 | 9-5/16 | 4-1/4 | 4-1/4 | 5/8 |

5" BOLT CIRCLE

| CAT. NO. | IPS | A | B | C | D | E | F | H |
|----------|-------|-------|--------|-------|---------|-------|-------|-----|
| GC-07-5 | 3/4 | 2-1/4 | 10 | 3-3/8 | 3-1/4 | 1-1/2 | 6-1/4 | 1/2 |
| GC-10-5 | 1 | 2-1/4 | 10 | 3-3/4 | 3-1/2 | 1-1/2 | 6-1/4 | 1/2 |
| GC-12-5 | 1-1/4 | 2-3/8 | 11 | 4-1/2 | 3-11/16 | 1-1/2 | 6-1/4 | 1/2 |
| GC-15-5 | 1-1/2 | 2-1/2 | 11 | 4-1/2 | 3-15/16 | 1-1/2 | 6-1/4 | 1/2 |
| GC-20-5 | 2 | 2-3/4 | 11 | 5 | 4-3/8 | 1-1/2 | 6-1/4 | 1/2 |
| GC-25-5 | 2-1/2 | 3-1/8 | 10-3/4 | 6-5/8 | 5-1/8 | 4-1/4 | 6-1/4 | 5/8 |
| GC-30-5 | 3 | 3-5/8 | 10-3/4 | 6-5/8 | 5-7/8 | 4-1/4 | 6-1/4 | 5/8 |
| GC-35-5 | 3-1/2 | 4 | 10-3/4 | 7-1/8 | 6-1/2 | 4-1/4 | 6-1/4 | 5/8 |
| GC-40-5 | 4 | 4-1/2 | 10-3/4 | 7-1/2 | 7-1/4 | 4-1/4 | 6-1/4 | 5/8 |
| GC-50-5 | 5 | 5 | 14-1/2 | 8-7/8 | 8-5/16 | 4-1/4 | 6-1/4 | 5/8 |
| GC-60-5 | 6 | 5-1/2 | 14-1/2 | 9-7/8 | 9-5/16 | 4-1/4 | 6-1/4 | 5/8 |

| RECOMMENDED TIGHTENING TORQUE | |
|---|---------------|
| No. 2024 Alum. Bolts With Alumilite Finish & No-Oxide Coating | |
| BOLT DIA. | FT. LB TORQUE |
| 1/2 | 30 |
| 5/8 | 50 |

NOTES:

- Supplied with Cap Screws for Upright Mounting unless otherwise specified. (Galv.)
- For Base Mounting on Cap and Pin Insulator add Suffix—B for Bolts, Nuts and Lockwashers.
Example: GC-10-3-B
- One Wrench Installation.

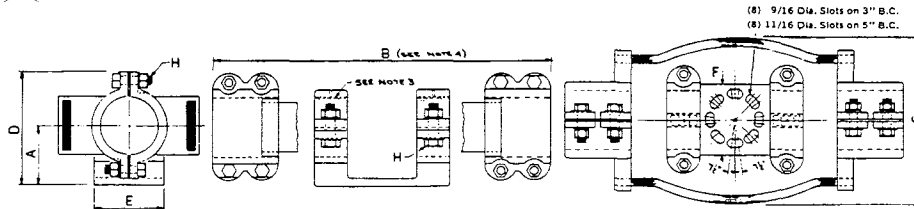
ROYAL SWITCHGEAR MANUFACTURING CO.

3995 Pine Lane SE • Bessemer, AL 35023 • (205) 426-4090 • FAX (205) 426-4095

POWER CONNECTORS **Fa-3**

EXPANSION BUS SUPPORT COUPLER

TYPE GCE



3" BOLT CIRCLE

| CAT. NO. | IPS | A | B | C | D | E | F | H |
|----------|-------|-------|--------|--------|-------|-------|-------|-----|
| GCE-07-3 | 3/4 | 2 | 18-1/4 | 6-7/8 | 3-3/4 | 1-1/2 | 4-1/4 | 1/2 |
| GCE-10-3 | 1 | 2 | 18-1/4 | 7-1/8 | 3-7/8 | 1-1/2 | 4-1/4 | 1/2 |
| GCE-12-3 | 1-1/4 | 2-1/4 | 20-1/4 | 7-5/8 | 4-3/8 | 1-1/2 | 4-1/4 | 1/2 |
| GCE-15-3 | 1-1/2 | 2-1/2 | 20-1/4 | 8 | 4-3/4 | 1-1/2 | 4-1/4 | 1/2 |
| GCE-20-3 | 2 | 2-3/4 | 20-1/4 | 8-1/2 | 5-1/4 | 1-1/2 | 4-1/4 | 1/2 |
| GCE-25-3 | 2-1/2 | 3-1/8 | 20-1/2 | 10-1/2 | 5-7/8 | 4-1/4 | 4-1/4 | 5/8 |
| GCE-30-3 | 3 | 3-5/8 | 20-1/2 | 10-1/2 | 6-3/8 | 4-1/4 | 4-1/4 | 5/8 |
| GCE-35-3 | 3-1/2 | 4 | 20-1/2 | 11-1/4 | 7 | 4-1/4 | 4-1/4 | 5/8 |
| GCE-40-3 | 4 | 4-1/2 | 20-1/2 | 12 | 7-5/8 | 4-1/4 | 4-1/4 | 5/8 |
| GCE-50-3 | 5 | 5 | 20-1/2 | 13-1/4 | 8-7/8 | 4-1/4 | 4-1/4 | 5/8 |
| GCE-60-3 | 6 | 5-1/2 | 20-1/2 | 15-1/4 | 9-7/8 | 4-1/4 | 4-1/4 | 5/8 |

5" BOLT CIRCLE

| CAT. NO. | IPS | A | B | C | D | E | F | H |
|----------|-------|-------|--------|--------|-------|-------|-------|-----|
| GCE-07-5 | 3/4 | 2-1/4 | 22-1/4 | 6-7/8 | 4 | 1-1/2 | 6-1/4 | 1/2 |
| GCE-10-5 | 1 | 2-1/4 | 22-1/4 | 7-1/8 | 4-1/8 | 1-1/2 | 6-1/4 | 1/2 |
| GCE-12-5 | 1-1/4 | 2-3/8 | 24-1/4 | 7-5/8 | 4-1/2 | 1-1/2 | 6-1/4 | 1/2 |
| GCE-15-5 | 1-1/2 | 2-1/2 | 24-1/4 | 8 | 4-3/4 | 1-1/2 | 6-1/4 | 1/2 |
| GCE-20-5 | 2 | 2-3/4 | 24-1/4 | 8-1/2 | 5-1/4 | 1-1/2 | 6-1/4 | 1/2 |
| GCE-25-5 | 2-1/2 | 3-1/8 | 24-1/2 | 10-1/2 | 5-7/8 | 4-1/4 | 6-1/4 | 5/8 |
| GCE-30-5 | 3 | 3-5/8 | 24-1/2 | 10-1/2 | 6-3/8 | 4-1/4 | 6-1/4 | 5/8 |
| GCE-35-5 | 3-1/2 | 4 | 24-1/2 | 11-1/4 | 7 | 4-1/4 | 6-1/4 | 5/8 |
| GCE-40-5 | 4 | 4-1/2 | 24-1/2 | 12 | 7-5/8 | 4-1/4 | 6-1/4 | 5/8 |
| GCE-50-5 | 5 | 5 | 24-1/2 | 13-1/4 | 8-7/8 | 4-1/4 | 6-1/4 | 5/8 |
| GCE-60-5 | 6 | 5-1/2 | 24-1/2 | 15-1/4 | 9-7/8 | 4-1/4 | 6-1/4 | 5/8 |

RECOMMENDED TIGHTENING TORQUE

No. 2024 Alum. Bolts With Alumilite
Finish & No-Oxide Coating

| BOLT DIA. | FT. LB TORQUE |
|-----------|---------------|
| 1/2 | 30 |
| 5/8 | 50 |

NOTES:

- Supplied with Cap Screws for Upright Mounting unless otherwise specified. (Galv.)
- For Base Mounting on Cap and Pin Insulator add Suffix-B for Bolts, Nuts and Lockwashers. **Example:** GCE-10-3-B
- Anti-chatter Springs available by adding Suffix-AC. **Example:** GCE-10-3-AC
- Dimension "B" is Mean Dimension for Installation.
- One Wrench Installation.

Fa-Bus Support

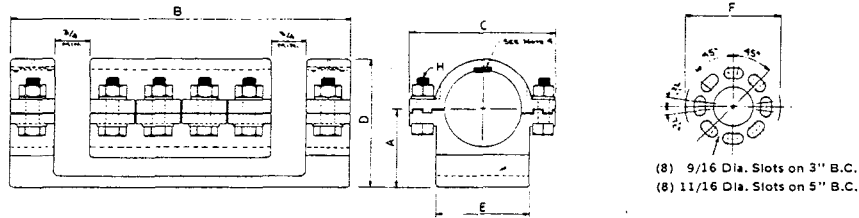
ROYAL SWITCHGEAR MANUFACTURING CO.

3995 Pine Lane SE • Bessemer, AL 35023 • (205) 426-4090 • FAX (205) 426-4095

Fa-4 POWER CONNECTORS

SLIDING BUS SUPPORT COUPLER

TYPE GCS



3" BOLT CIRCLE

| CAT. NO. | IPS | A | B | C | D | E | F | H |
|----------|-------|-------|--------|-------|---------|-------|-------|-----|
| GCS-07-3 | 3/4 | 2 | 12-3/4 | 3-3/8 | 3 | 1-1/2 | 4-1/4 | 1/2 |
| GCS-10-3 | 1 | 2 | 12-3/4 | 3-3/4 | 3-1/4 | 1-1/2 | 4-1/4 | 1/2 |
| GCS-12-3 | 1-1/4 | 2-1/4 | 13-3/4 | 4-1/2 | 3-9/16 | 1-1/2 | 4-1/4 | 1/2 |
| GCS-15-3 | 1-1/2 | 2-1/2 | 13-3/4 | 4-1/2 | 3-15/16 | 1-1/2 | 4-1/4 | 1/2 |
| GCS-20-3 | 2 | 2-3/4 | 13-3/4 | 5 | 4-3/8 | 1-1/2 | 4-1/4 | 1/2 |
| GCS-25-3 | 2-1/2 | 3-1/8 | 15-1/2 | 6-5/8 | 5-1/8 | 4-1/4 | 4-1/4 | 5/8 |
| GCS-30-3 | 3 | 3-5/8 | 15-1/2 | 6-5/8 | 5-7/8 | 4-1/4 | 4-1/4 | 5/8 |
| GCS-35-3 | 3-1/2 | 4 | 15-1/2 | 7-1/8 | 6-1/2 | 4-1/4 | 4-1/4 | 5/8 |
| GCS-40-3 | 4 | 4-1/2 | 15-1/2 | 7-1/2 | 7-1/4 | 4-1/4 | 4-1/4 | 5/8 |
| GCS-50-3 | 5 | 5 | 17-1/2 | 8-7/8 | 8-5/16 | 4-1/4 | 4-1/4 | 5/8 |
| GCS-60-3 | 6 | 5-1/2 | 17-1/2 | 9-7/8 | 9-5/16 | 4-1/4 | 4-1/4 | 5/8 |

5" BOLT CIRCLE

| CAT. NO. | IPS | A | B | C | D | E | F | H |
|----------|-------|-------|----|-------|---------|-------|-------|-----|
| GCS-07-5 | 3/4 | 2-1/4 | 15 | 3-3/8 | 3-1/4 | 1-1/2 | 6-1/4 | 1/2 |
| GCS-10-5 | 1 | 2-1/4 | 15 | 3-3/4 | 3-1/2 | 1-1/2 | 6-1/4 | 1/2 |
| GCS-12-5 | 1-1/4 | 2-3/8 | 16 | 4-1/2 | 3-11/16 | 1-1/2 | 6-1/4 | 1/2 |
| GCS-15-5 | 1-1/2 | 2-1/2 | 16 | 4-1/2 | 3-15/16 | 1-1/2 | 6-1/4 | 1/2 |
| GCS-20-5 | 2 | 2-3/4 | 16 | 5 | 4-3/8 | 1-1/2 | 6-1/4 | 1/2 |
| GCS-25-5 | 2-1/2 | 3-1/8 | 18 | 6-5/8 | 5-1/8 | 4-1/4 | 6-1/4 | 5/8 |
| GCS-30-5 | 3 | 3-5/8 | 18 | 6-5/8 | 5-7/8 | 4-1/4 | 6-1/4 | 5/8 |
| GCS-35-5 | 3-1/2 | 4 | 18 | 7-1/8 | 6-1/2 | 4-1/4 | 6-1/4 | 5/8 |
| GCS-40-5 | 4 | 4-1/2 | 18 | 7-1/2 | 7-1/4 | 4-1/4 | 6-1/4 | 5/8 |
| GCS-50-5 | 5 | 5 | 20 | 8-7/8 | 8-5/16 | 4-1/4 | 6-1/4 | 5/8 |
| GCS-60-5 | 6 | 5-1/2 | 20 | 9-7/8 | 9-5/16 | 4-1/4 | 6-1/4 | 5/8 |

RECOMMENDED TIGHTENING TORQUE

No. 2024 Alum. Bolts With Alumilite Finish & No-Oxide Coating

| BOLT DIA. | FT. LB TORQUE |
|-----------|---------------|
| 1/2 | 30 |
| 5/8 | 50 |

NOTES:

- Supplied with Cap Screws for Upright Mounting unless otherwise specified. (Galv.)
- For Base Mounting on Cap and Pin Insulator add Suffix-B for Bolts, Nuts and Lockwashers.
Example: GCS-10-3-B
- Caps are reversible for Tight or Slip Fit.
- Anti-chatter Springs available by adding Suffix-AC. Example: GCS-10-3-AC
- One Wrench Installation.

ROYAL SWITCHGEAR MANUFACTURING CO.

3995 Pine Lane SE • Bessemer, AL 35023 • (205) 426-4090 • FAX (205) 426-4095

POWER CONNECTORS **Fa-5**

BUS SUPPORT FITTING

TYPES TC-31 & TC-51

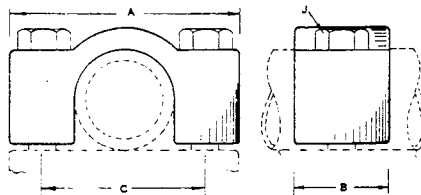


FIG. 1

| CAT. NO. | COND. SIZE | | FIG. NO. | BOLT SIZE | MAX. DIM. IN INCHES | | |
|----------|------------|------|----------|-----------|---------------------|-------|---|
| | TUBE | B.C. | | | J | A | B |
| TC-31 | | | | | | | |
| 54299 | 1/2 | 3" | 1 | 1/2 | 4-1/4 | 1-3/4 | 3 |
| 54300 | 3/4 | 3" | 1 | 1/2 | 4-1/4 | 1-3/4 | 3 |
| 54301 | 1 | 3" | 1 | 1/2 | 4-1/4 | 1-3/4 | 3 |
| 54302 | 1-1/4 | 3" | 1 | 1/2 | 4-1/4 | 1-3/4 | 3 |
| 54303 | 1-1/2 | 3" | 1 | 1/2 | 4-1/4 | 1-3/4 | 3 |
| TC-51 | | | | | | | |
| 54304 | 1/2 | 5" | 1 | 5/8 | 6-1/4 | 1-3/4 | 5 |
| 54305 | 3/4 | 5" | 1 | 5/8 | 6-1/4 | 1-3/4 | 5 |
| 54306 | 1 | 5" | 1 | 5/8 | 6-1/4 | 1-3/4 | 5 |
| 54307 | 1-1/4 | 5" | 1 | 5/8 | 6-1/4 | 1-3/4 | 5 |
| 54308 | 1-1/2 | 5" | 1 | 5/8 | 6-1/4 | 1-3/4 | 5 |
| 54309 | 2 | 5" | 1 | 5/8 | 6-1/4 | 1-3/4 | 5 |

Example for Ordering: No. 54309 Royal type TC-51 aluminum outdoor bus support fitting for 2" IPS aluminum pipe, 5" B.C.

TYPES TC-32 & TC-52

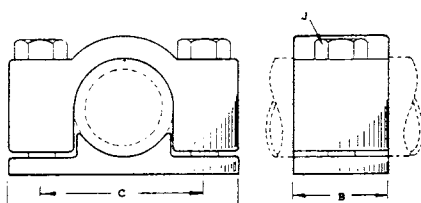


FIG. 1

| CAT. NO. | COND. SIZE | | FIG. NO. | BOLT SIZE | MAX. DIM. IN INCHES | | |
|----------|------------|------|----------|-----------|---------------------|-------|---|
| | TUBE | B.C. | | | J | A | B |
| TC-32 | | | | | | | |
| 54310 | 1/2 | 3" | 1 | 1/2 | 4-1/4 | 1-3/4 | 3 |
| 54311 | 3/4 | 3" | 1 | 1/2 | 4-1/4 | 1-3/4 | 3 |
| 54312 | 1 | 3" | 1 | 1/2 | 4-1/4 | 1-3/4 | 3 |
| 54313 | 1-1/4 | 3" | 1 | 1/2 | 4-1/4 | 1-3/4 | 3 |
| 54314 | 1-1/2 | 3" | 1 | 1/2 | 4-1/4 | 1-3/4 | 3 |
| TC-52 | | | | | | | |
| 57205 | 1/2 | 5" | 1 | 5/8 | 6-1/4 | 1-3/4 | 5 |
| 54315 | 3/4 | 5" | 1 | 5/8 | 6-1/4 | 1-3/4 | 5 |
| 54316 | 1 | 5" | 1 | 5/8 | 6-1/4 | 1-3/4 | 5 |
| 54317 | 1-1/4 | 5" | 1 | 5/8 | 6-1/4 | 1-3/4 | 5 |
| 54318 | 1-1/2 | 5" | 1 | 5/8 | 6-1/4 | 1-3/4 | 5 |
| 54319 | 2 | 5" | 1 | 5/8 | 6-1/4 | 1-3/4 | 5 |

Example for Ordering: No. 54313 Royal type TC-32 aluminum outdoor bus support fitting for 1-1/4 IPS aluminum pipe, 3" B.C.

Fa-Bus Support

ROYAL SWITCHGEAR MANUFACTURING CO.

3995 Pine Lane SE • Bessemer, AL 35023 • (205) 426-4090 • FAX (205) 426-4095

Fa-6 POWER CONNECTORS

BUS SUPPORT FITTING

TYPES TR-31 & TR-51

| CAT. NO. | COND. SIZE | | FIG. NO. | BOLT SIZE | MAX. DIM. IN INCHES | | | |
|--------------|------------|------|----------|-----------|---------------------|--------|---|-------|
| | TUBE | B.C. | | | A | B | C | D |
| TR-31 | | | | | | | | |
| 54320 | 1/2 | 3" | 1 | 1/2 | 4-1/4 | 3-7/16 | 3 | 9/16 |
| 54321 | 3/4 | 3" | 1 | 1/2 | 4-1/4 | 3-7/16 | 3 | 9/16 |
| 54322 | 1 | 3" | 1 | 1/2 | 4-1/4 | 3-7/16 | 3 | 9/16 |
| TR-51 | | | | | | | | |
| 54818 | 1/2 | 5" | 1 | 5/8 | 6-1/4 | 5 | 5 | 11/16 |
| 54325 | 3/4 | 5" | 1 | 5/8 | 6-1/4 | 5 | 5 | 11/16 |
| 54326 | 1 | 5" | 1 | 5/8 | 6-1/4 | 5 | 5 | 11/16 |
| 54327 | 1-1/4 | 5" | 1 | 5/8 | 6-1/4 | 5 | 5 | 11/16 |
| 54328 | 1-1/2 | 5" | 1 | 5/8 | 6-1/4 | 5 | 5 | 11/16 |

Example for Ordering: No. 54322 Royal type TR-31 aluminum outdoor bus support fitting for 1" IPS aluminum pipe, 3" B.C.

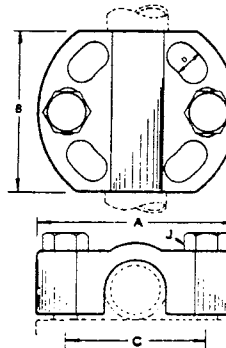


FIG. 1

TYPES TR-32 & TR-52

| CAT. NO. | COND. SIZE | | FIG. NO. | BOLT SIZE | MAX. DIM. IN INCHES | | | |
|--------------|------------|------|----------|-----------|---------------------|--------|---|-------|
| | TUBE | B.C. | | | A | B | C | D |
| TR-32 | | | | | | | | |
| 54342 | 1/2 | 3" | 1 | 1/2 | 4-1/4 | 3-7/16 | 3 | 9/16 |
| 54330 | 3/4 | 3" | 1 | 1/2 | 4-1/4 | 3-7/16 | 3 | 9/16 |
| 54331 | 1 | 3" | 1 | 1/2 | 4-1/4 | 3-7/16 | 3 | 9/16 |
| TR-52 | | | | | | | | |
| 54352 | 1/2 | 5" | 1 | 5/8 | 6-1/4 | 5 | 5 | 11/16 |
| 54335 | 3/4 | 5" | 1 | 5/8 | 6-1/4 | 5 | 5 | 11/16 |
| 54336 | 1 | 5" | 1 | 5/8 | 6-1/4 | 5 | 5 | 11/16 |
| 54337 | 1-1/4 | 5" | 1 | 5/8 | 6-1/4 | 5 | 5 | 11/16 |
| 54338 | 1-1/2 | 5" | 1 | 5/8 | 6-1/4 | 5 | 5 | 11/16 |

Example for Ordering: No. 54340 Royal type TR-52 aluminum outdoor bus support fitting for 2-1/2" IPS aluminum pipe, 5" B.C.

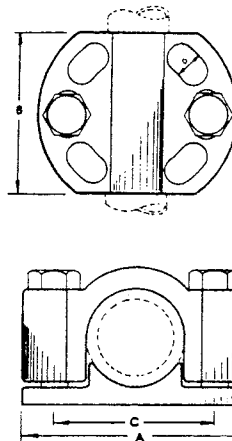


FIG. 1

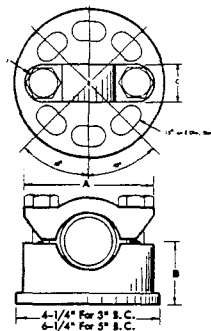
ROYAL SWITCHGEAR MANUFACTURING CO.

3995 Pine Lane SE • Bessemer, AL 35023 • (205) 426-4090 • FAX (205) 426-4095

POWER CONNECTORS Fa-7

BUS SUPPORT FITTING

TYPES AP-3 & AP-5

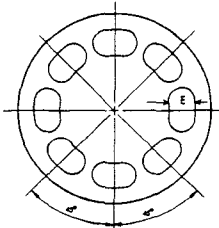


ADJUSTABLE FOR IPS ALUMINUM PIPE OR CABLE

| CAT. NO. | COND. SIZE | | FIG. NO. | BOLT SIZE J | MAX. DIM. IN INCHES | | | |
|----------|-------------|----------|----------|-------------|---------------------|-------|-------|-------|
| | TUBE | CABLE | | | A | B | C | E |
| AP-3 | | | | | | | | |
| 54343 | 1/2-1 | 1/0-1590 | 1 | 1/2 | 3-5/16 | 2 | 7/8 | 9/16 |
| 54344 | 1-1/4-1-1/2 | | 1 | 1/2 | 4-1/8 | 2-3/8 | 7/8 | 9/16 |
| 54345 | 2 | | 1 | 1/2 | 4-5/8 | 2-1/2 | 7/8 | 9/16 |
| 54346 | 2-1/2 | | 1 | 1/2 | 5-1/8 | 3 | 7/8 | 9/16 |
| AP-5 | | | | | | | | |
| 54347 | 1/2-1 | 1/0-1590 | 1 | 1/2 | 3-5/16 | 2 | 1-3/4 | 11/16 |
| 54348 | 1-1/4-1-1/2 | | 1 | 1/2 | 4-1/8 | 2-3/8 | 1-3/4 | 11/16 |
| 54349 | 2 | | 1 | 1/2 | 4-5/8 | 2-1/2 | 1-3/4 | 11/16 |
| 54350 | 2-1/2 | | 1 | 1/2 | 5-1/8 | 3 | 1-3/4 | 11/16 |
| 54351 | 3 | | 1 | 1/2 | 5-3/4 | 3-1/4 | 1-3/4 | 11/16 |

Example for Ordering: No. 54344 Royal type AP-3 aluminum outdoor bus support fitting for 1-1/4" - 1-1/2" IPS aluminum pipe, 3" B.C.

NOTE: Cat. No. 54343 & 54347 have Reversible Caps for Conductor Range.

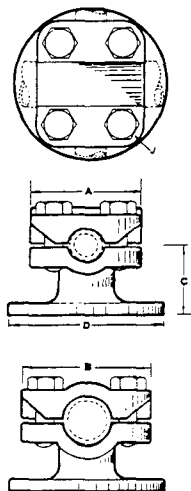


TYPES AT-3 & AT-5

ADJUSTABLE FOR IPS ALUMINUM PIPE OR CABLE

| CAT. NO. | COND. SIZE | | FIG. NO. | BOLT SIZE J | MAX. DIM. IN INCHES | | | |
|----------|-------------|----------|----------|-------------|---------------------|-------|-------|-------|
| | TUBE | CABLE | | | A | B | C | D |
| AT-3 | | | | | | | | |
| 54353 | 1/2-1 | 1/0-1590 | 1 | 1/2 | 3-1/8 | 3-3/8 | 2-1/2 | 4-1/4 |
| 54354 | 1-1/4-1-1/2 | | 1 | 1/2 | 3-11/16 | 4 | 2-7/8 | 4-1/4 |
| 54355 | 1-1/2-2 | | 1 | 1/2 | 4 | 4-1/2 | 3 | 4-1/4 |
| 54356 | 2-1/2-3 | | 1 | 1/2 | 5 | 5-5/8 | 3-3/4 | 4-1/4 |
| AT-5 | | | | | | | | |
| 54357 | 1/2-1 | 1/0-1590 | 1 | 1/2 | 3-1/8 | 3-3/8 | 2-1/2 | 6-1/4 |
| 54358 | 1-1/4-1-1/2 | | 1 | 1/2 | 3-11/16 | 4 | 2-7/8 | 6-1/4 |
| 54359 | 1-1/2-2 | | 1 | 1/2 | 4 | 4-1/2 | 3 | 6-1/4 |
| 54360 | 2-1/2-3 | | 1 | 1/2 | 5 | 5-5/8 | 3-3/4 | 6-1/4 |

Example for Ordering: No. 54353 Royal type AT-3 aluminum outdoor bus support fitting for 1/2" - 1" IPS aluminum pipe, 3" B.C.



Fa-Bus Support

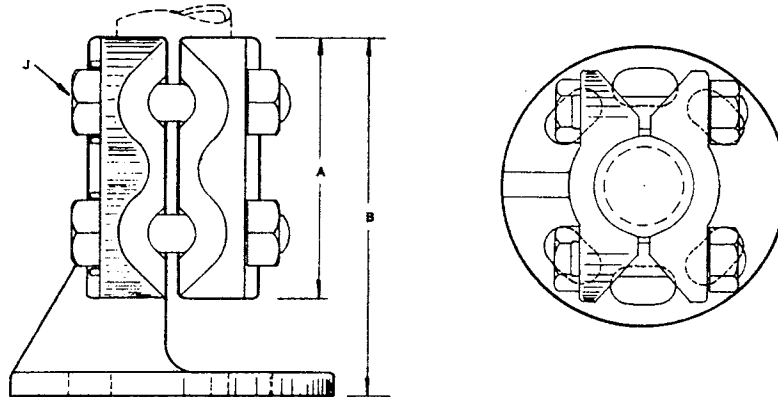
ROYAL SWITCHGEAR MANUFACTURING CO.

3995 Pine Lane SE • Bessemer, AL 35023 • (205) 426-4090 • FAX (205) 426-4095

Fa-8 POWER CONNECTORS

VERTICAL BUS SUPPORT FITTING

TYPES VT-3 & VT-5



VERTICAL IPS ALUMINUM PIPE

| CAT. NO. | | COND. SIZE TUBE | FIG. NO. | BOLT SIZE | | MAX. DIM. IN INCHES | |
|----------|-------|-----------------|----------|-----------|-------|---------------------|---|
| VT-3 | VT-5 | | | J | | A | B |
| 54410 | 54422 | 3/4 | 1 | 1/2 | 3-1/2 | 4-3/4 | |
| 54411 | 54423 | 1 | 1 | 1/2 | 3-1/2 | 4-3/4 | |
| 54412 | 54424 | 1-1/4 | 1 | 1/2 | 3-1/2 | 4-3/4 | |
| 54413 | 54425 | 1-1/2 | 1 | 1/2 | 3-1/2 | 4-3/4 | |
| 54414 | 54426 | 2 | 1 | 5/8 | 3-1/2 | 4-3/4 | |
| 54415 | 54427 | 2-1/2 | 1 | 5/8 | 3-1/2 | 4-3/4 | |
| 54416 | 54428 | 3 | 1 | 5/8 | 3-1/2 | 4-3/4 | |
| 54417 | 54429 | 3-1/2 | 1 | 5/8 | 3-1/2 | 4-3/4 | |
| 54418 | 54430 | 4 | 1 | 3/4 | 4-1/2 | 5-3/4 | |
| 54420 | 54432 | 5 | 1 | 3/4 | 4-1/2 | 5-3/4 | |

Example for Ordering: No. 54414 Royal type VT-3 Aluminum bus support fitting for 2" IPS Aluminum pipe, 3" B.C.

Slotted holes in the base, a feature of all Royal bus support fittings, provide 15° of angular adjustment.

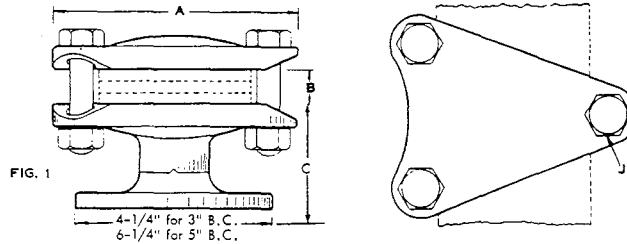
ROYAL SWITCHGEAR MANUFACTURING CO.

3995 Pine Lane SE • Bessemer, AL 35023 • (205) 426-4090 • FAX (205) 426-4095

POWER CONNECTORS **Fa-9**

BUS SUPPORT FITTING

TYPES AFA-3 & AFA-5



ALUMINUM BUS BAR CLAMPS

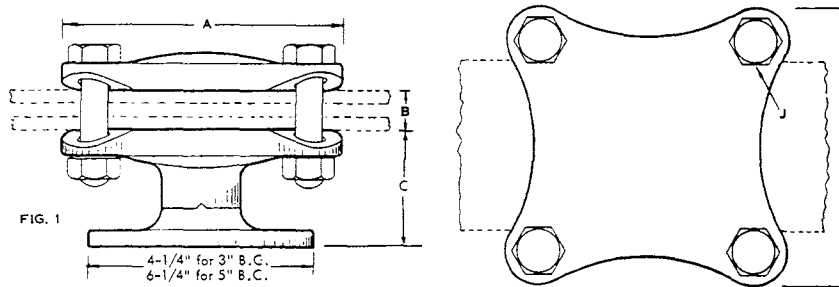
| CAT. NO. | | COND. SIZE BAR | FIG. NO. | BOLT SIZE J | MAX. DIM. IN INCHES | | |
|----------|-------|----------------|----------|-------------|---------------------|---------|-------|
| AFA-3 | AFA-5 | | | | A | B | C |
| 54611 | 54616 | 2 | 1 | 1/2 | 4 | SPECIFY | 3 |
| 54612 | 54617 | 3 | 1 | 1/2 | 5 | | 3 |
| 54613 | 54618 | 4 | 1 | 5/8 | 6-3/4 | | 3-1/2 |
| 54614 | 54619 | 5 | 1 | 5/8 | 7-3/4 | | 3-1/2 |
| 54615 | 54620 | 6 | 1 | 5/8 | 8-3/4 | | 3-1/2 |

Example for Ordering: No. 54614 Royal type AFA-3 Aluminum bus support fitting for (2) 3/8"x5" Aluminum bars, 1-1/8" opening, 3" B.C.

NOTE: Specify clamp opening or number of bars and spacing.

Slotted holes in the base, a feature of all Royal bus support fittings, provide 15° of angular adjustment.

TYPES AFH-3 & AFH-5



ALUMINUM BUS BAR CLAMPS

| CAT. NO. | | COND. SIZE BAR | FIG. NO. | BOLT SIZE J | MAX. DIM. IN INCHES | | |
|----------|-------|----------------|----------|-------------|---------------------|---------|-------|
| AFH-3 | AFH-5 | | | | A | B | C |
| 54621 | 54626 | 2 | 1 | 1/2 | 4 | SPECIFY | 3 |
| 54622 | 54627 | 3 | 1 | 1/2 | 5 | | 3 |
| 54623 | 54628 | 4 | 1 | 5/8 | 6-3/4 | | 3-1/2 |
| 54624 | 54629 | 5 | 1 | 5/8 | 7-3/4 | | 3-1/2 |
| 54625 | 54630 | 6 | 1 | 5/8 | 8-3/4 | | 3-1/2 |

Example for Ordering: No. 54630 Royal type AFH-5 Aluminum bus support fitting for (3) 1/2"x6" Aluminum bars, 2-1/2" opening, 5" B.C.

Slotted holes in the base, a feature of all Royal bus support fittings, provide 15° of angular adjustment.

Fa-Bus Support

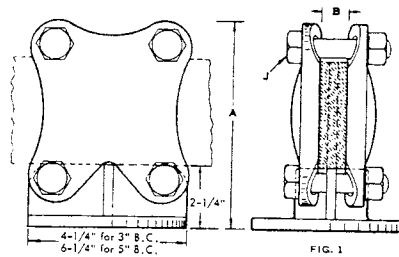
ROYAL SWITCHGEAR MANUFACTURING CO.

3995 Pine Lane SE • Bessemer, AL 35023 • (205) 426-4090 • FAX (205) 426-4095

Fa-10 POWER CONNECTORS

BUS SUPPORT FITTING

TYPES VFA-3 & VFA-5

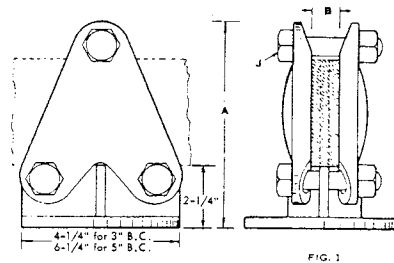


ALUMINUM BUS BAR CLAMPS

| CAT. NO. | | COND. SIZE BAR | FIG. NO. | BOLT SIZE J | MAX. DIM. IN INCHES | |
|----------|-------|----------------|----------|-------------|---------------------|---------|
| VFA-3 | VFA-5 | | | | A | B |
| 54631 | 54636 | 2 | 1 | 1/2 | 4-5/8 | SPECIFY |
| 54632 | 54637 | 3 | 1 | 1/2 | 5-5/8 | |
| 54633 | 54638 | 4 | 1 | 5/8 | 7-3/8 | |
| 54634 | 54639 | 5 | 1 | 5/8 | 8-3/8 | |
| 54635 | 54640 | 6 | 1 | 5/8 | 9-3/8 | |

Example for Ordering: No. 54633 Royal type VFA-3 Aluminum bus support fitting for (3) 1/2"x4" Aluminum bar, 2-1/2" opening, 3" B.C. Slotted holes in the base, a feature of all Royal bus support fittings, provide 15° of angular adjustment.

TYPES VFH-3 & VFH-5



ALUMINUM BUS BAR CLAMPS

| CAT. NO. | | COND. SIZE BAR | FIG. NO. | BOLT SIZE J | MAX. DIM. IN INCHES | |
|----------|-------|----------------|----------|-------------|---------------------|---------|
| VFH-3 | VFH-5 | | | | A | B |
| 54641 | 54646 | 2 | 1 | 1/2 | 4-5/8 | SPECIFY |
| 54642 | 54647 | 3 | 1 | 1/2 | 5-5/8 | |
| 54643 | 54648 | 4 | 1 | 5/8 | 7-3/8 | |
| 54644 | 54649 | 5 | 1 | 5/8 | 8-3/8 | |
| 54645 | 54650 | 6 | 1 | 5/8 | 9-3/8 | |

Example for Ordering: No. 54649 Royal type VFH-5 Aluminum bus support fitting for (2) 1/2"x5" Aluminum bars, 1-1/2" opening, 5" B.C.

Slotted holes in the base, a feature of all Royal bus support fittings, provide 15° of angular adjustment.

ROYAL SWITCHGEAR MANUFACTURING CO.

3995 Pine Lane SE • Bessemer, AL 35023 • (205) 426-4090 • FAX (205) 426-4095