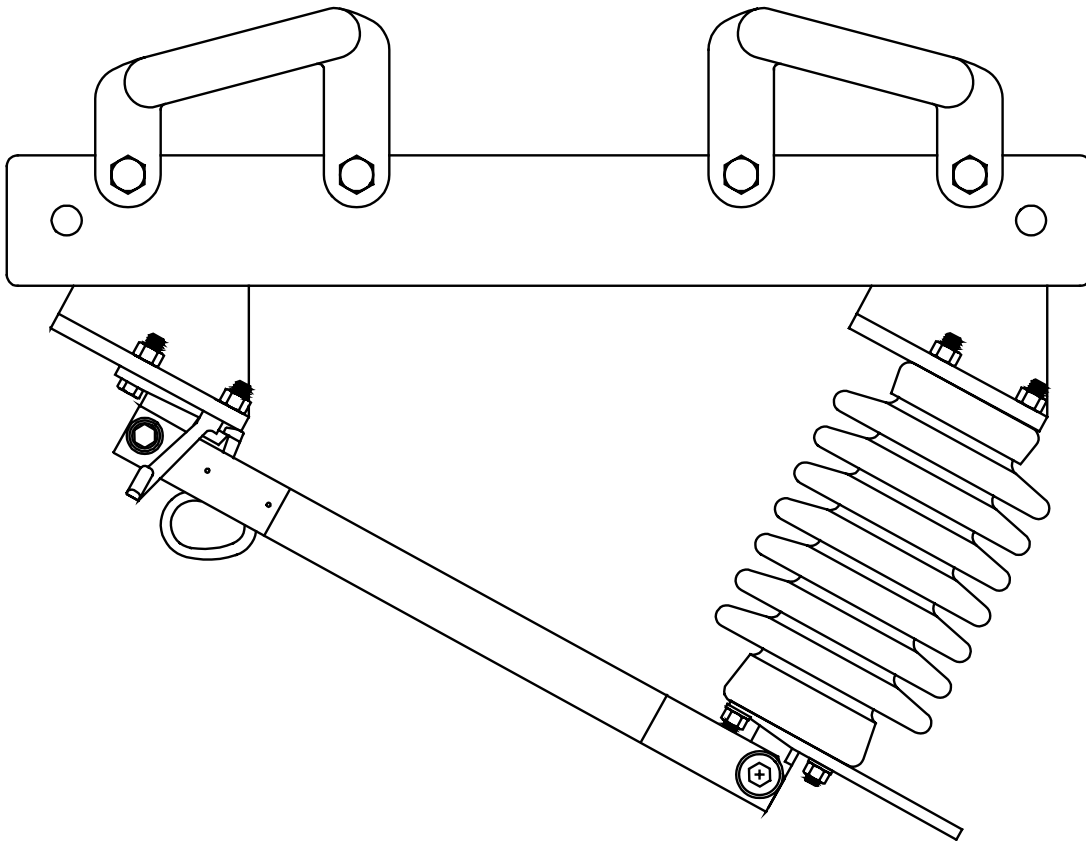


TYPE BILT DISCONNECT SWITCHES

Bulletin No. 38-0494

OUTDOOR-HOOK OPERATED (DISTRIBUTION CLASS)



- FOR SECTIONALIZING AND TAP APPLICATIONS
- 7.5kV THROUGH 35kV
- 900 AMPERES -- 40,000 AMPERES MOMENTARY
- FURNISHED WITH HOOKS FOR LOADBREAK TOOL
- USED ON ARMLESS OR CROSSARM LINE CONSTRUCTION

ROYAL SWITCHGEAR MANUFACTURING COMPANY

FEATURES OF THE TYPE BILT DISCONNECT SWITCH

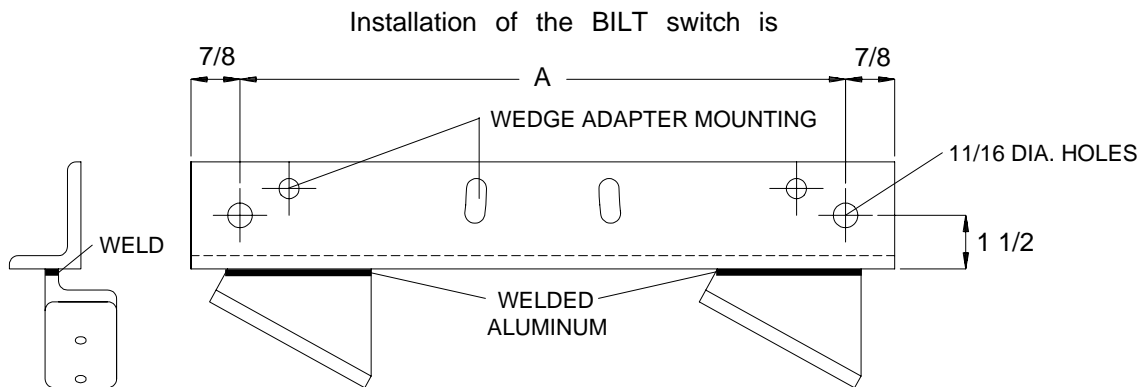
- Eliminates insulator in tension.
- Furnished with hooks for use with portable loadbreak tool.
- Light-compact-easy to install. Structural members are aluminum.
- Tinned 2-hole NEMA terminal pads.
- Switch furnished with 2-1/4" bolt circle insulators.
- Smooth, simple latch action - ease and certainty of operation.
- All switch current carrying parts of hard-drawn copper, cast copper, or high conductivity bronze.
- Truss-type blade design for extra strength.
- Double-tongue contact - extra contact surface.
- All contacts silver plated.

The Royal BILT switch was designed to meet increasing demands for unobtrusive overhead distribution line construction. It is a compact switch for mounting directly in the line or on a single pole top insulator. It has the special feature of not placing the insulator in tension.

Applications of the BILT switch are for sectionalizing or tapping distribution lines from 7.5kV through 35kV. Current ratings are 900 amperes continuous, 40,000 amperes momentary.

simple. For a feeder tap, the conductor fastens directly to the switch base. For sectionalizing, a suspension insulator is used at one end of the switch. The switch may be dead-ended at a pole-top insulator by means of an extension link.

Configurations typically used for sectionalizing and for feeder taps are shown below.



Compact **welded bases** provide additional flexibility in mounting.

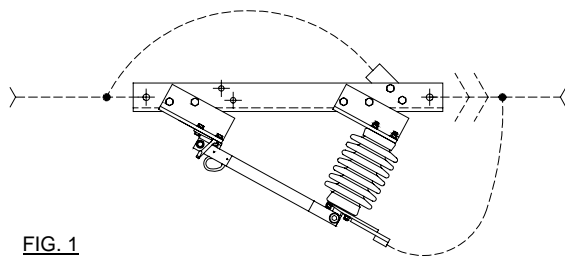


FIG. 1
SECTIONALIZING, USING AN IN-LINE INSULATOR.

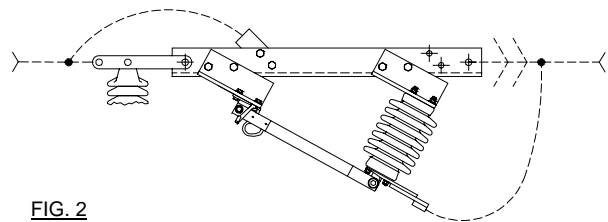


FIG. 2
SECTIONALIZING, SWITCH ATTACHED TO A POLE-TOP OR CROSSARM INSULATOR.

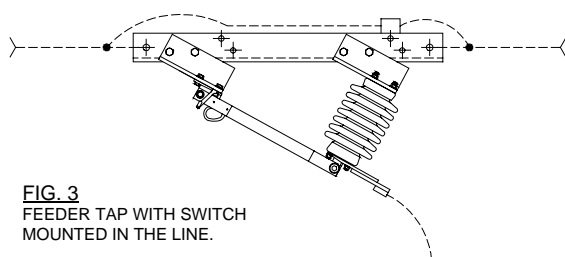


FIG. 3
FEEDER TAP WITH SWITCH MOUNTED IN THE LINE.

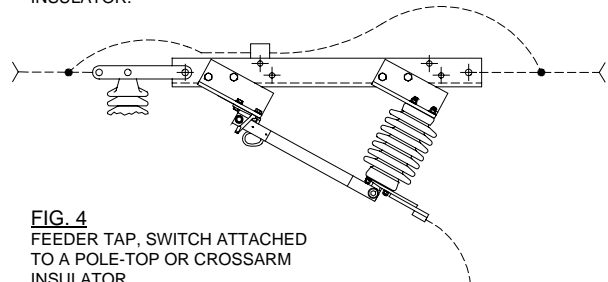
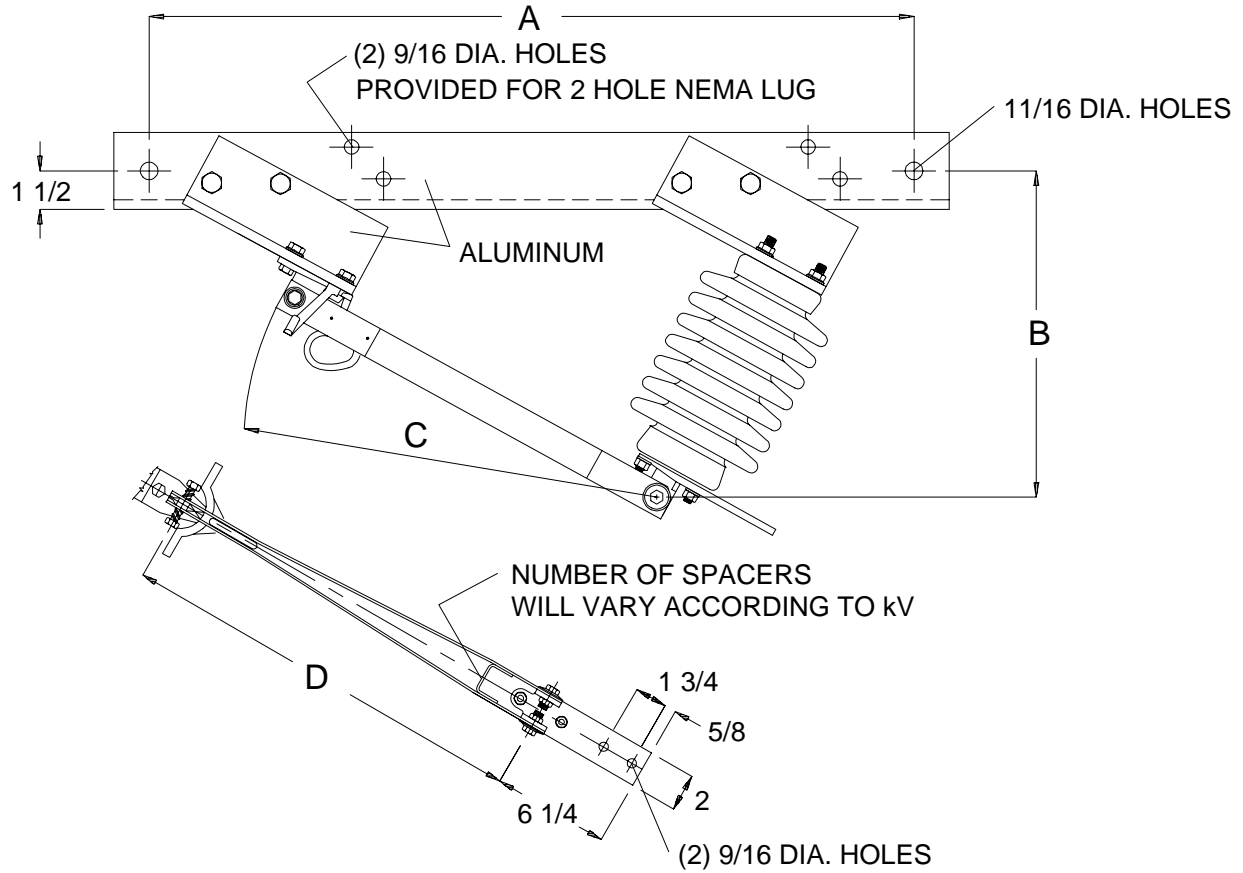


FIG. 4
FEEDER TAP, SWITCH ATTACHED TO A POLE-TOP OR CROSSARM INSULATOR.

TYPE BILT DISCONNECT SWITCH

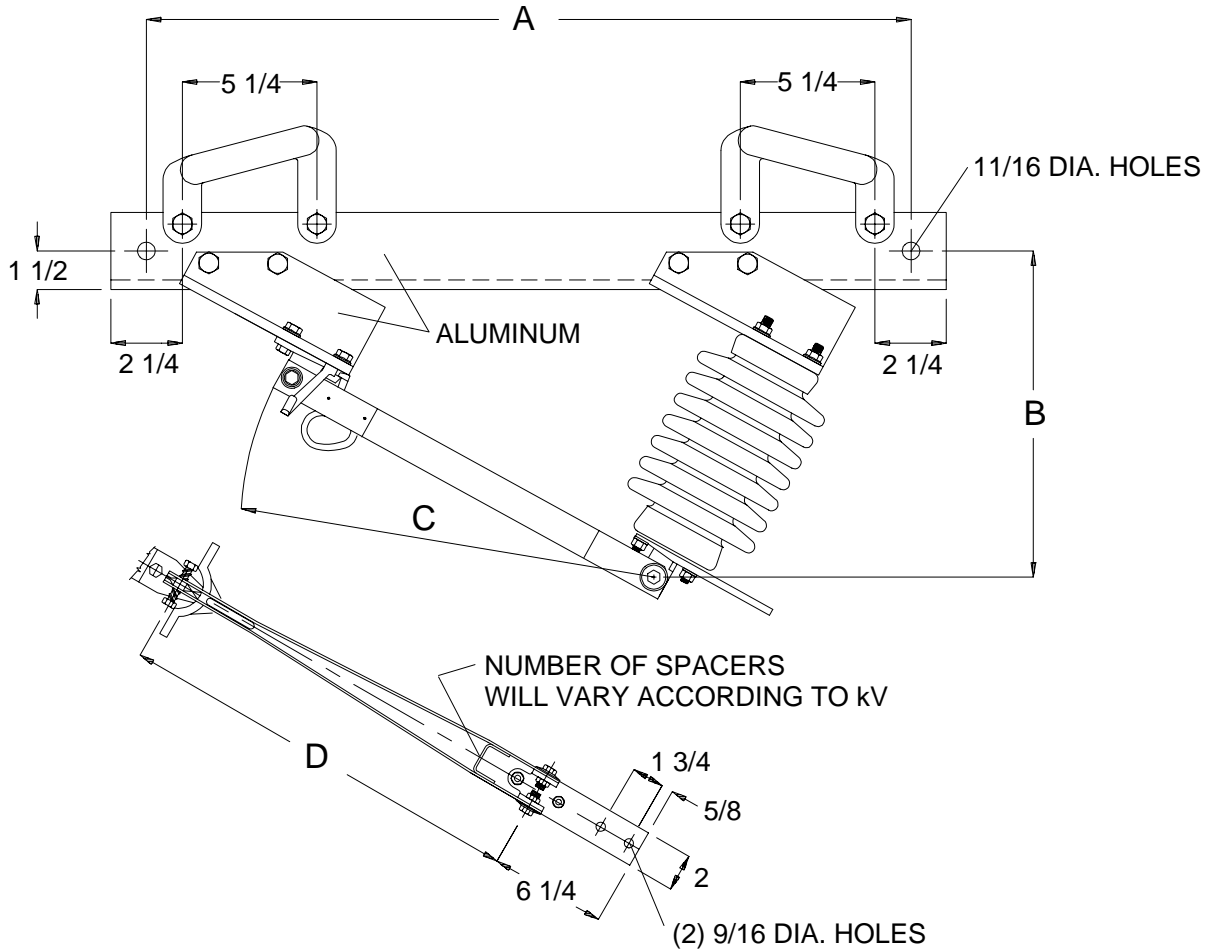


CATALOG NUMBER		RATINGS		INSULATOR	BIL (kV)	DIMENSIONS IN INCHES					LBS.
BOLTED	**WELDED	kV	*AMP			A BOLTED	A WELDED	B	C	D	
19837	20359	7.5	900	2 1/4" B.C.	95	25 1/4	17	11 1/4	12 3/4	12	22
19838	20360	15	900	2 1/4" B.C.	95	25 1/4	17	11 1/4	12 3/4	12	22
19839	20361	15	900	2 1/4" B.C.	110	27 5/8	19 1/4	12 3/8	14 3/4	14	24
19840	20362	23	900	2 1/4" B.C.	125	28 7/8	19 1/4	13 1/2	14 3/4	14	27
19841	20363	23	900	2 1/4" B.C.	150	30 5/8	21 1/2	13 7/8	16 3/4	16	30
19842	20364	34.5	900	2 1/4" B.C.	150	30 5/8	21 1/2	13 7/8	16 3/4	16	30

NOTES: * Ratings per ANSI standard C37.32-2.1.1 - 1990 is 900 amperes.
 ** For wedge adapters on welded base add **-50AH** for **1/2" diameter** and **-75AH** for **3/4" diameter**.
 Wide range type ARB bolted terminal lugs can be supplied at extra charge.

TYPE BILT DISCONNECT SWITCH

- Supplied with adapters for using wedge connectors to attach switch to overhead conductor.
- Can be installed on existing span without cutting conductor.



BASIC CATALOG NUMBER	WITH WEDGE ADAPTER		RATINGS		INSULATOR	BIL (kV)	DIMENSIONS IN INCHES				LBS.
	1/2" DIA. 4/0 EQUIV.	3/4" DIA. 477 KCMIL EQUIV.	kV	*AMP			A	B	C	D	
20215	-50AH	-75AH	7.5	900	2 1/4" B.C.	95	25 1/4	11 1/4	12 3/4	12	24
20216	-50AH	-75AH	15	900	2 1/4" B.C.	95	25 1/4	11 1/4	12 3/4	12	24
20217	-50AH	-75AH	15	900	2 1/4" B.C.	110	27 5/8	12 3/8	14 3/4	14	26
20218	-50AH	-75AH	23	900	2 1/4" B.C.	125	28 7/8	13 1/2	14 3/4	14	29
20219	-50AH	-75AH	23	900	2 1/4" B.C.	150	30 5/8	13 7/8	16 3/4	16	32
20220	-50AH	-75AH	34.5	900	2 1/4" B.C.	150	30 5/8	13 7/8	16 3/4	16	32

NOTES: * Rating per ANSI standard C37.32-2.1.1 - 1990 is 900 amperes.

Ordering example - A 15kV, 110kV BIL switch with 1/2" diameter wedge adapters is catalog number 20217-50AH.

Wide range type ARB bolted terminal lugs can be supplied at extra charge.

ROYAL SWITCHGEAR MANUFACTURING COMPANY

1-800-426-4380