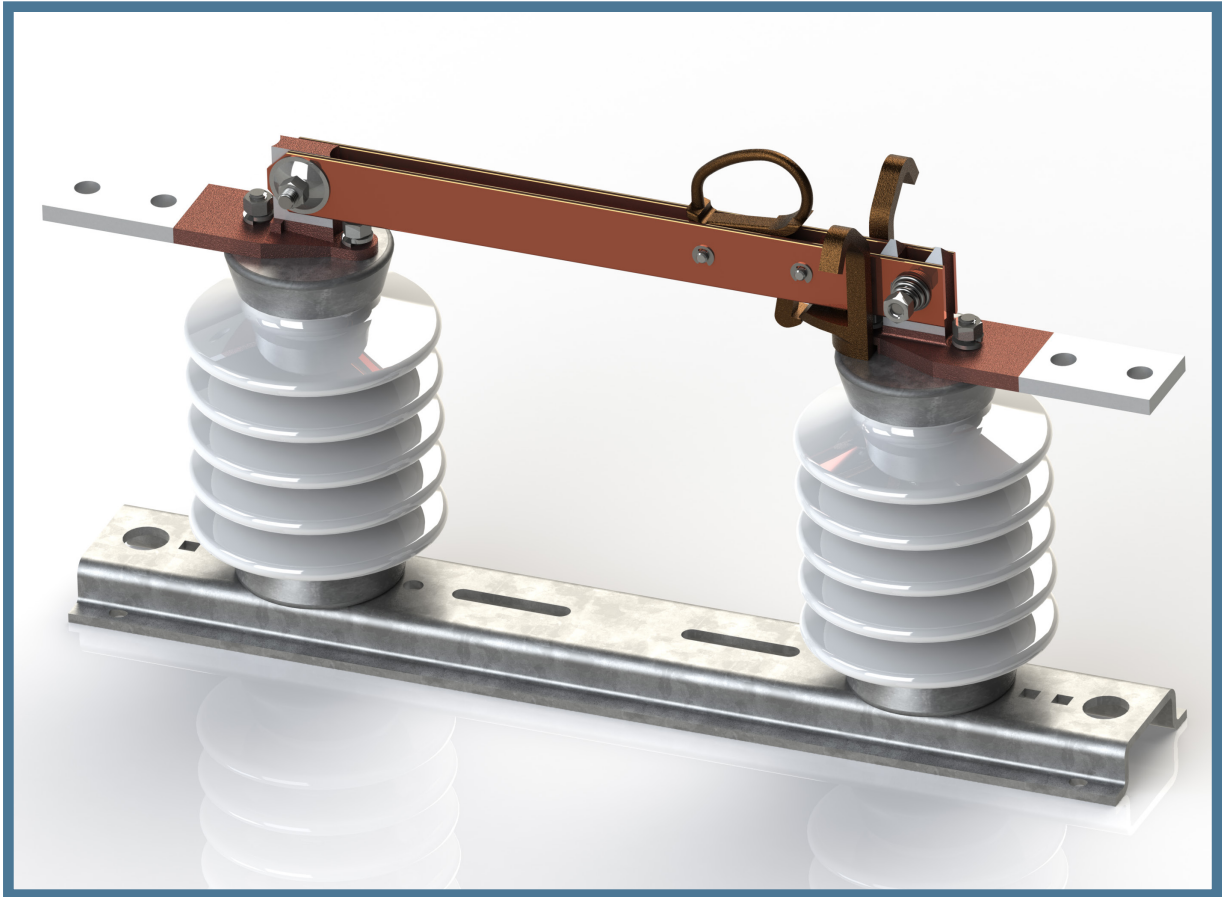


TYPE BLT DISCONNECT SWITCHES

070-170730.1
(Rev. of 070-140307.1)

OUTDOOR-HOOK OPERATED



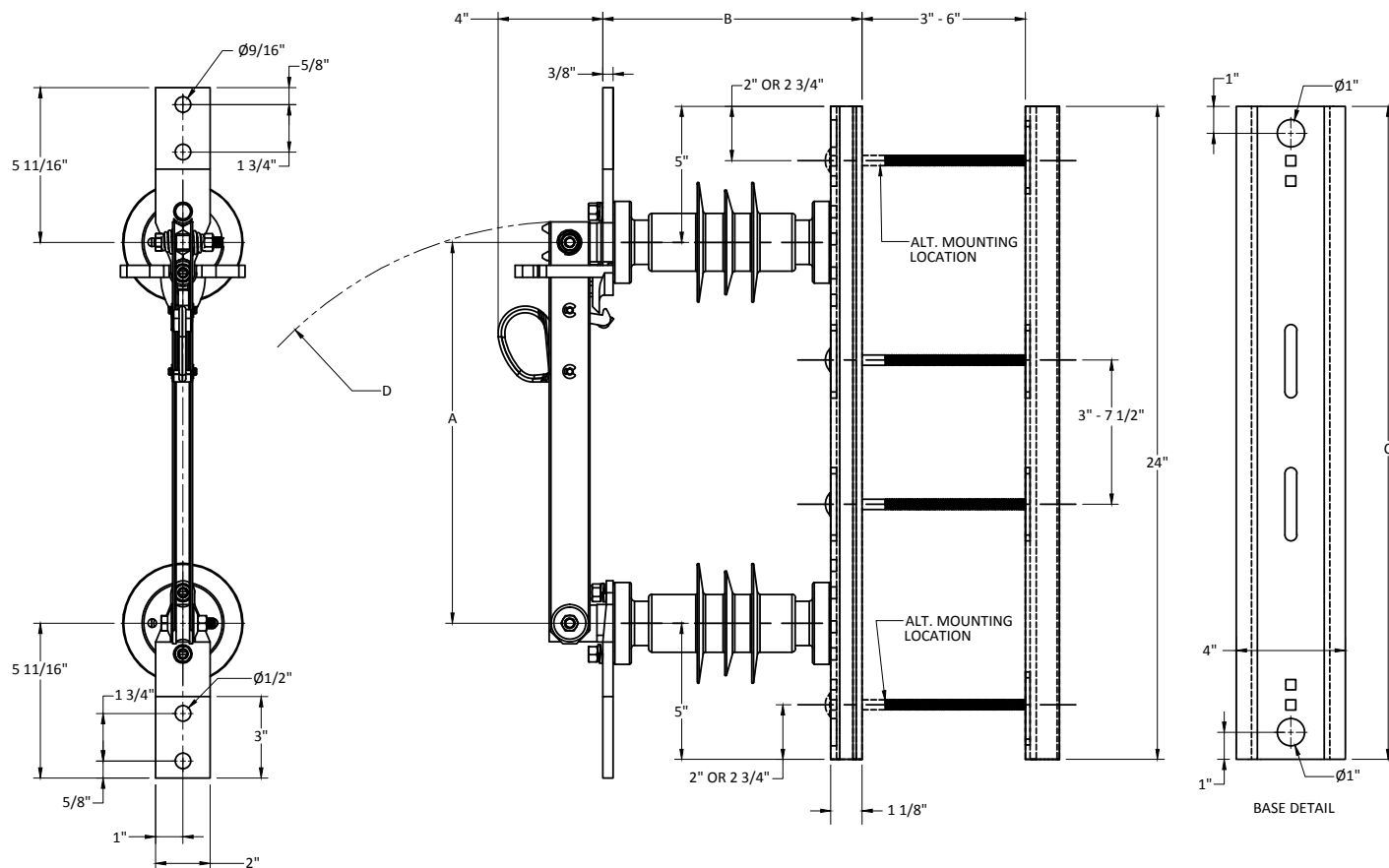
- 8.3KV through 38KV
- 600A & 900A Continuous Current
- Furnished with hooks for loadbreak tool
- REA/RUS approved



MANUFACTURER OF HIGH VOLTAGE PRODUCTS SINCE 1914
1.800.426.4380

BLT PARALLEL BLADE DISTRIBUTION CLASS DISCONNECT SWITCH

- Compact design for crossarm or pole top mounting.
- Simple, sure latch mechanism.
- Double-tongue latch contact for extra contact surface.
- Operable with portable loadbreak tool.
- All contacts silver plated.
- All live parts of hard-drawn copper, cast copper, or high-conductivity bronze.
- Extensive terminal options (page 6).



kV Nom. (kV Max.)	Amps Continuous	B.I.L. Rating (kV)	Dimensions (in)				Approx Single Pole Weight Polymer	Approx Single Pole Weight Porcelain
			A	B	C	D		
7.5 (8.3)	600	110	14	9 1/2	24	14 3/4	28 lbs.	38 lbs.
	900		14	9 1/2	24	14 3/4	28 lbs.	38 lbs.
15 (15.5)	600		14	9 1/2	24	14 3/4	28 lbs.	38 lbs.
	900		14	9 1/2	24	14 3/4	28 lbs.	38 lbs.
23 (27)	600	150	16	11 1/2	26	16 3/4	34 lbs.	46 lbs.
	900		16	11 1/2	26	16 3/4	34 lbs.	46 lbs.
34.5 (38)	600		16	11 1/2	26	16 3/4	34 lbs.	46 lbs.
	900		16	11 1/2	26	16 3/4	34 lbs.	46 lbs.

NOTES:

- Terminal connector options and ordering information is detailed on page 6.
- Base is suitable for single or double crossarm mounting. Backup channel and (2) 8" lg. mounting bolts will be furnished for single-crossarm mounting unless otherwise specified.

[illegible]

kV Nom. (kV Max.)	Amps Continuous	B.I.L. Rating (kV)	Dimensions (in)				Approx Single Pole Weight Polymer	Approx Single Pole Weight Porcelain
			A	B	C	D		
7.5 (8.3)	600	110	14	9 1/2	24	14 3/4	28 lbs.	38 lbs.
	900		14	9 1/2	24	14 3/4	28 lbs.	38 lbs.
15 (15.5)	600		14	9 1/2	24	14 3/4	28 lbs.	38 lbs.
	900		14	9 1/2	24	14 3/4	28 lbs.	38 lbs.
23 (27)	600	150	16	11 1/2	26	16 3/4	34 lbs.	46 lbs.
	900		16	11 1/2	26	16 3/4	34 lbs.	46 lbs.
34.5 (38)	600		16	11 1/2	26	16 3/4	34 lbs.	46 lbs.
	900		16	11 1/2	26	16 3/4	34 lbs.	46 lbs.

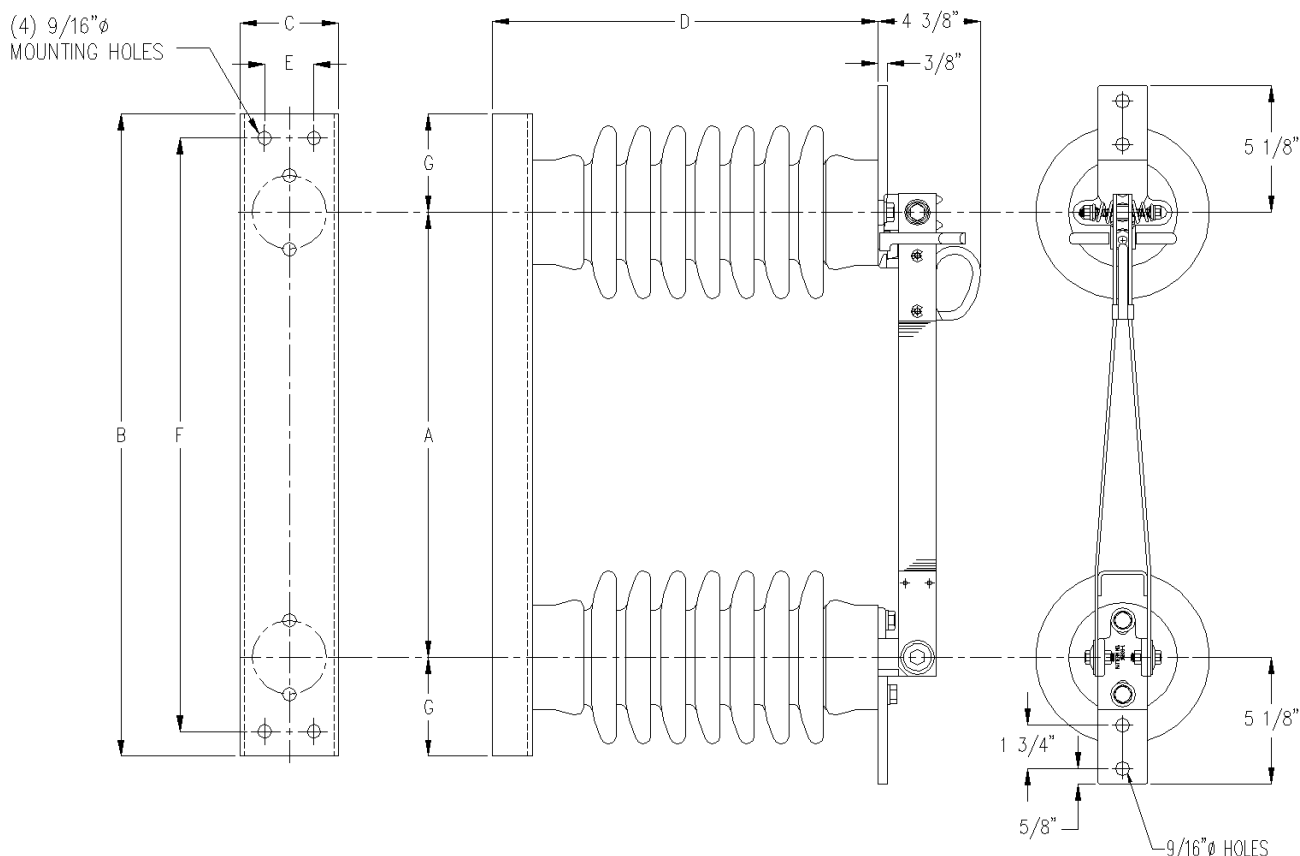
- a. Terminal connector options and ordering information is detailed on page 6.
- b. Base is suitable for single or double crossarm mounting. Backup channel and (2) 8" lg. mounting bolts will be furnished for single-crossarm mounting unless otherwise specified.

BLT-3 TRUSS BLADE SUBSTATION CLASS DISCONNECT SWITCH

The BLT-3 has the same features and options as the BLT-Truss blade but with the added robustness of station class insulators.

Custom bases available to meet user specifications. Contact surfaces are silver

plated and all current carrying parts are of hard-drawn copper, cast copper, or high conductivity bronze. The truss type, hard-drawn copper blades straddle the contact tongue providing two contact surfaces.



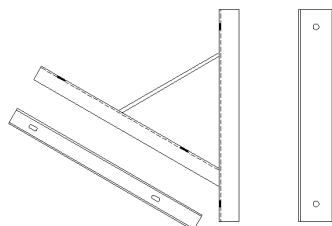
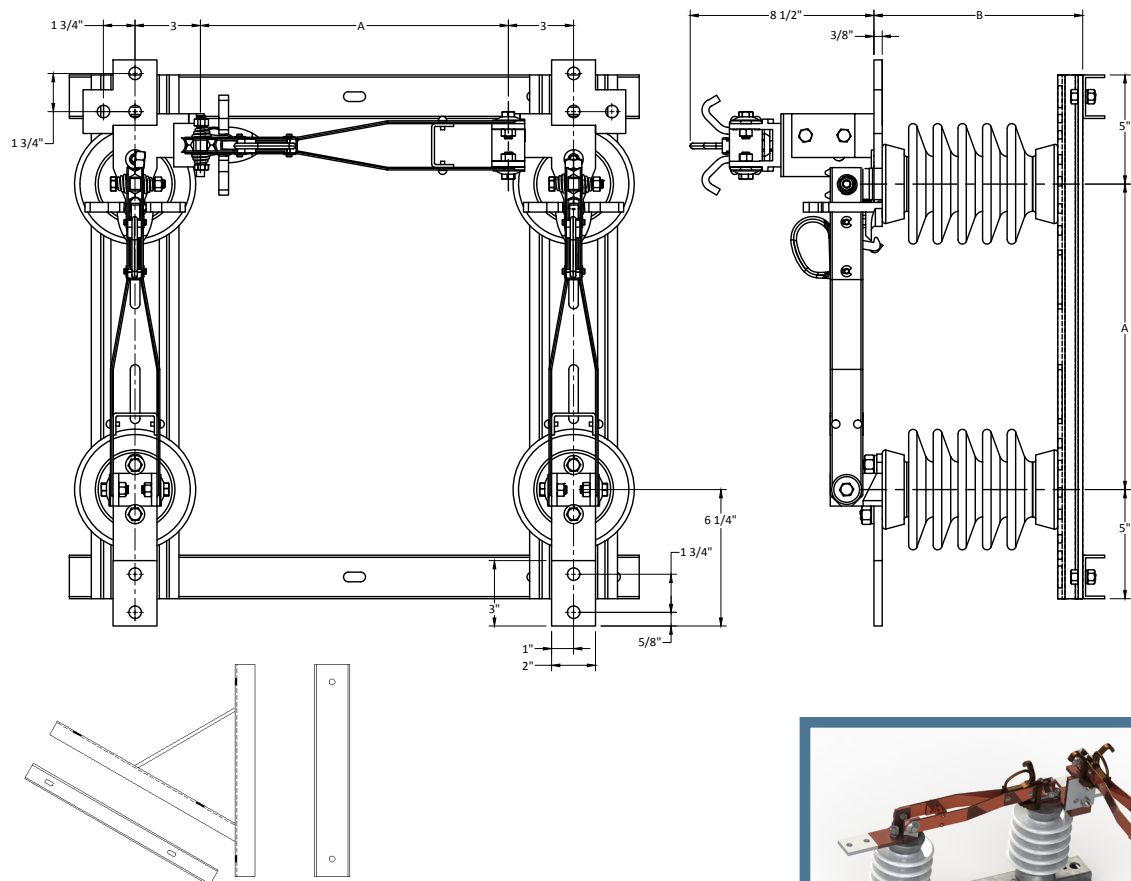
kV Nom. (kV Max.)	Amps Continuous	Insulator T.R. Number	B.I.L. Rating (kV)	Dimensions (in)							Approx Single Pole Weight Polymer	Approx Single Pole Weight Porcelain
				A	B	C	D	E	F	G		
7.5 (8.3)	600	TR-202	95	12	20	4	9 1/8	2	18	4	32 lbs.	46 lbs.
	900											
15 (15.5)	600	TR-205	110	15	23	4	11 5/8	2	21	4	36 lbs.	50 lbs.
	900											
23 (27)	600	TR-208	150	18	26	4	15 5/8	2	24	4	40 lbs.	74 lbs.
	900											
34.5 (38)	600	TR-210	200	24	32	4	19 5/8	2	30	4	45 lbs.	93 lbs.
	900											

NOTES:

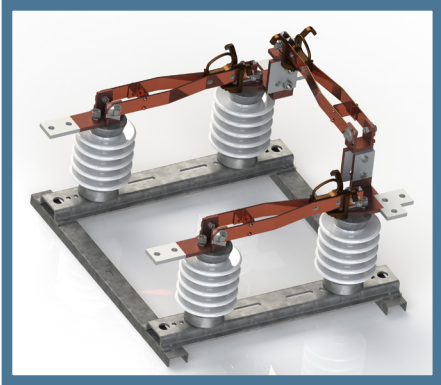
- Terminal connector options and ordering information is detailed on page 6.
- Channel base is suitable for substation structure mounting.
- Switch is furnished with 3 inch bolt circle ANSI station post insulators.

TYPE BP TRUSS BLADE DISTRIBUTION CLASS BY-PASS DISCONNECT SWITCH

The type BP is a cleanly designed three-blade disconnect switch appropriate for several by-pass applications. The live parts are the same as the type BLT switch. The simple design and operation features make it dependable over many years of service.



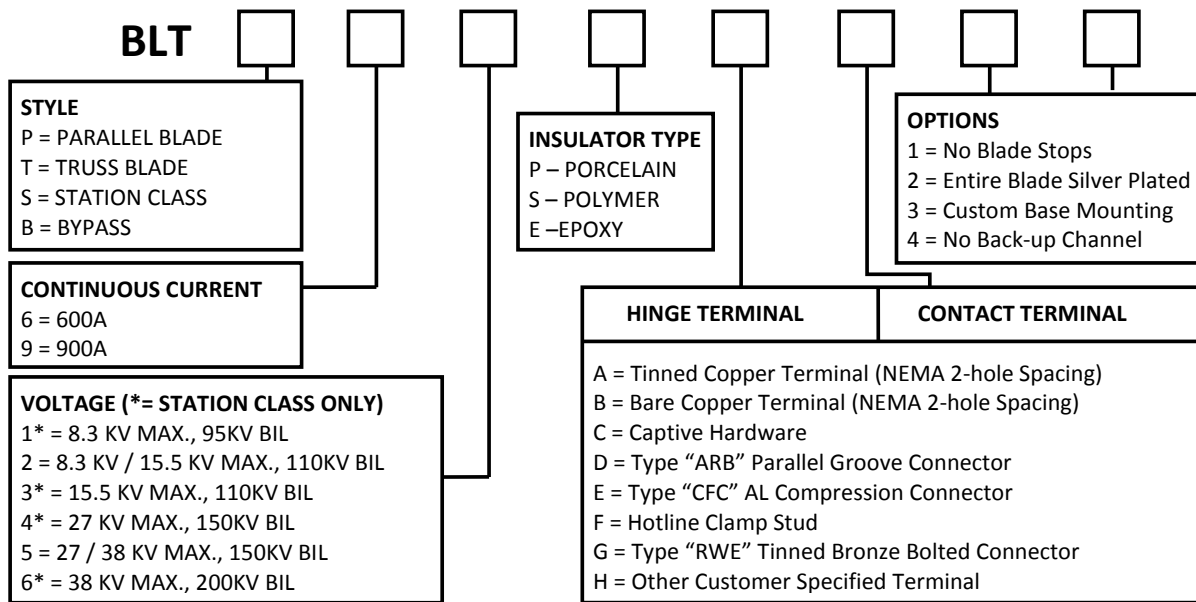
Vertical Bracket



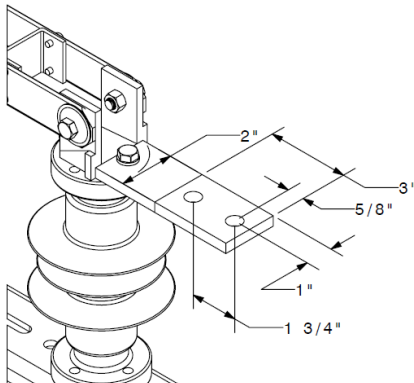
- Simple, sure latch mechanism.
- All contacts silver-plated.
- Double-tongue latch contact for extra contact surface.
- Operable with portable loadbreak tool.
- All live parts of hard-drawn copper, cast copper, or high conductivity bronze.
- Base is hot dipped galvanized furnished with two back-up channels and hardware.
- Vertical mounting bracket available when specified.
- Bypass Blade adjustable to 30 ° for vertical mount applications.

kV Nom. (kV Max.)	Amps Continuous	B.I.L. Rating (kV)	Dimensions (in)		Approx Single Pole Weight Polymer	Approx Single Pole Weight Porcelain
			A	B		
7.5 (8.3)	600	110	14	9 1/2	58 lbs.	82 lbs.
	900		14	9 1/2	58 lbs.	82 lbs.
15 (15.5)	600		14	9 1/2	58 lbs.	82 lbs.
	900		14	9 1/2	58 lbs.	82 lbs.
23 (27)	600	150	16	11 1/2	68 lbs.	104 lbs.
	900		16	11 1/2	68 lbs.	104 lbs.
34.5 (38)	600		16	11 1/2	68 lbs.	104 lbs.
	900		16	11 1/2	68 lbs.	104 lbs.

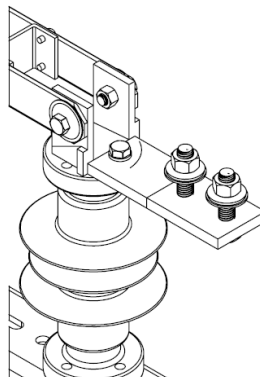
TYPE BLT SWITCH CATALOG NUMBERING & OPTIONS



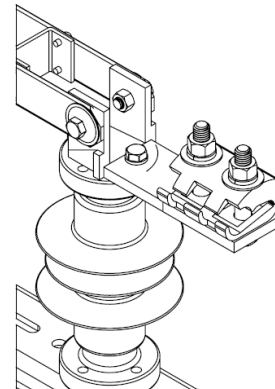
Terminal Options (truss blade and polymer insulators shown):



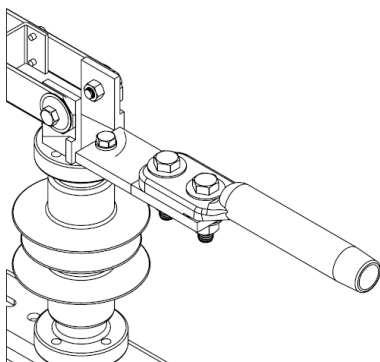
OPTION A - TINNED TERMINAL
OPTION B - BARE COPPER TERMINAL



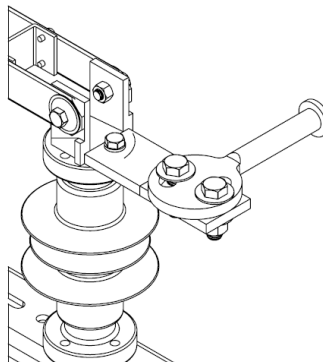
OPTION C - CAPTIVE HARDWARE INCLUDES (2) SS BOLT, (2) SS FLAT WASHERS, (2) SS LOCK WASHERS, & (2) SS NUTS PER TERMINAL CONTAINED WITH RECESSED NYLON WASHERS FOR ONE WRENCH INSTALLATION OF CONNECTORS.



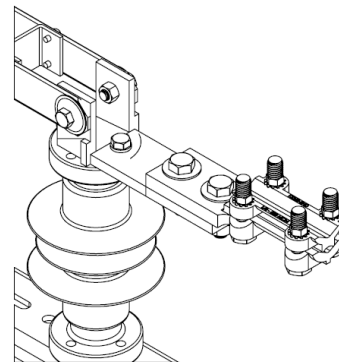
OPTION D - TYPE "ARB" TINNED ALUMINUM CONNECTOR WITH ATTACHING HARDWARE
CABLE RANGE: #2 SOLID - 556.5 AAC



OPTION E - TYPE "CFC-740-2N" ALUMINUM COMPRESSION CONNECTOR WITH ATTACHING HARDWARE
CABLE RANGE: 300 ACSR - 397.5 ACSR



OPTION F - ADJUSTABLE HOTLINE CLAMP WITH ATTACHING HARDWARE



OPTION G - TYPE "RWE-13604" TINNED TERMINAL CONNECTOR WITH ATTACHING HARDWARE
CABLE RANGE: 1/0 SOLID - 500 MCM CU