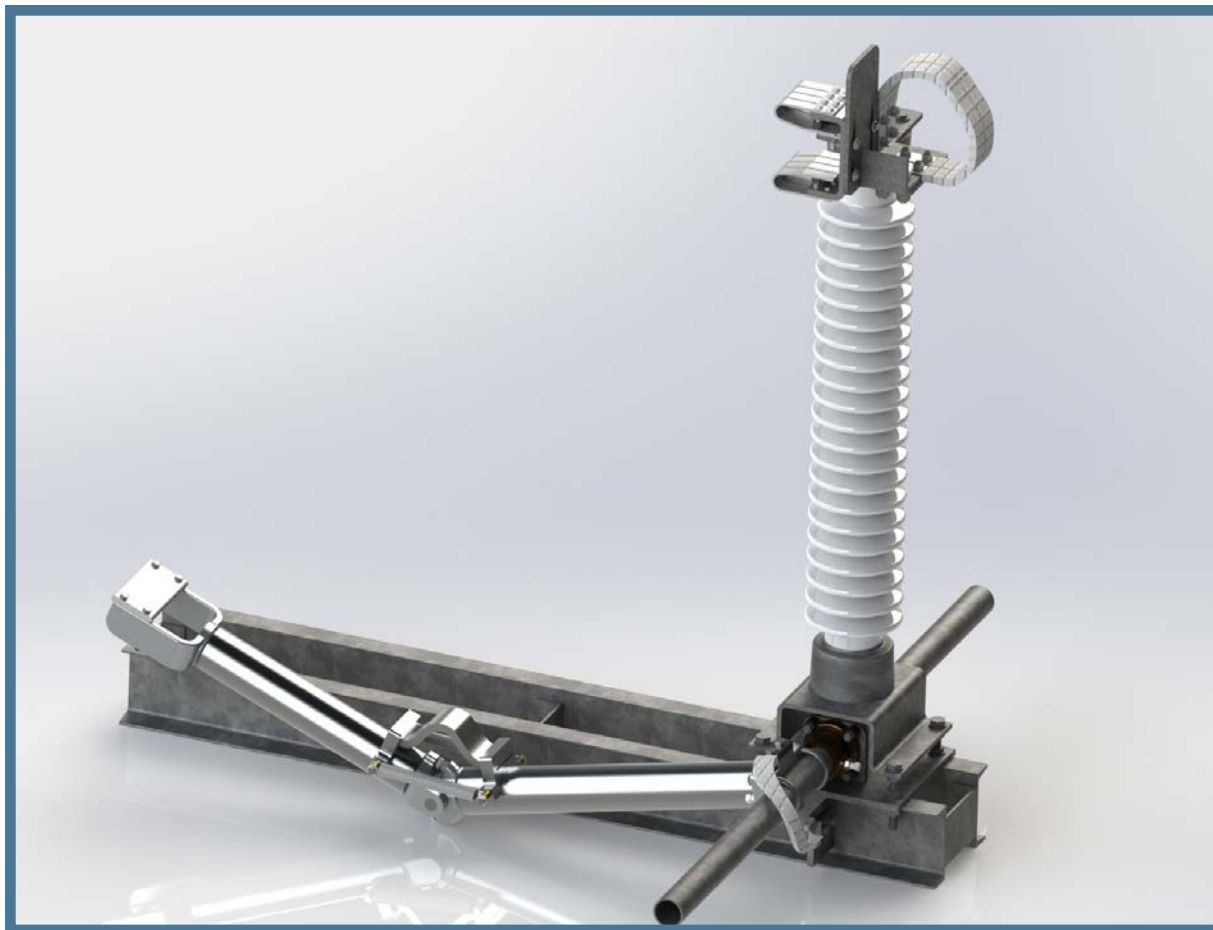


# TYPE GS GROUNDING SWITCH

051-150710.1  
(Initial Release)

3-PHASE, GROUP-OPERATED (SUBSTATION AND TRANSMISSION APPLICATIONS)



- Horizontal upright, vertical or underhung mounting. Parallel or perpendicular orientation (parallel shown).
- Manual or motor operated control mechanism
- Stand-alone or integrated with any Royal group operated switch
- Articulated blade at 115kV and above for ease of operation
- 15KV through 345KV, up to 120kA momentary

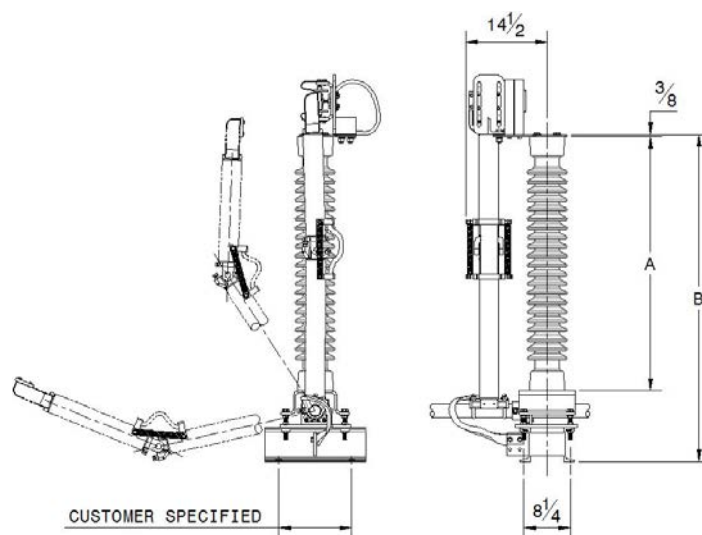
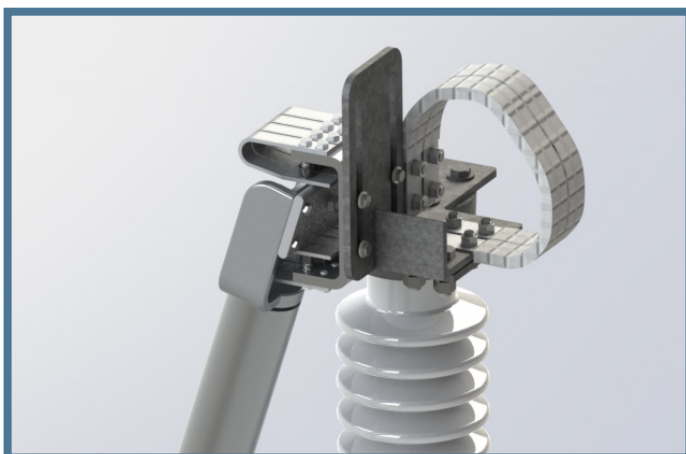


MANUFACTURER OF HIGH VOLTAGE PRODUCTS SINCE 1914  
1.800.426.4380

## FEATURES OF THE TYPE GS SWITCH

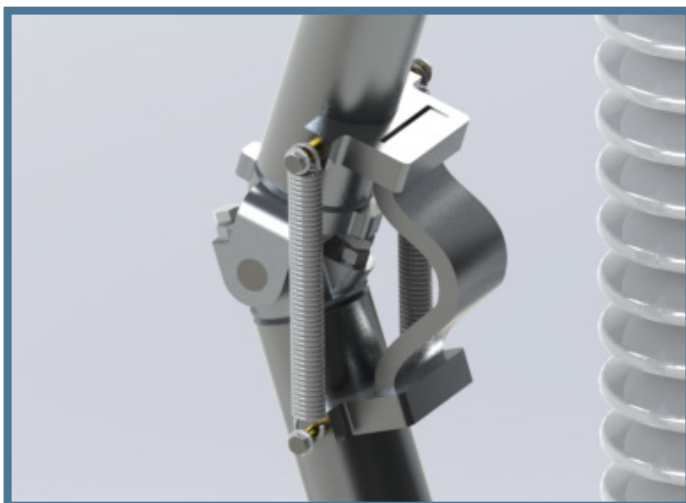
### SLIDING CONTACT ASSEMBLY

The sliding reverse loop contact assembly allows for ease of operation up to 345kV. Typical grounding switch designs become difficult to operate at transmission voltages above 115kV. As the contact enters the jaw assembly, the jaw slides upward and makes for easy operation with the contacts. The tin-plated braided copper grounding strap carries the fault current and allows for the sliding components to be removed from the current path.



### LAMINATE ALUMINUM HINGE

The GS uses a hinge mechanism to articulate the blade into the contacts. Welded laminate aluminum carries the current at the hinge. This design feature allows the current path to bypass the mechanical components.



### FLEXIBILITY OF DESIGN

The GS can be ordered as a stand alone switch or integrated with any of Royal's group operated switches. Parallel or perpendicular blade configurations are available at the customer's request. All integral ground switches will have the operating pipe mechanically interlocked with the line switch as a standard feature.

kV Nom. (kV Max.)	kA Mom. (Ka Peak)	Insulator T.R. No.	B.I.L. Rating (kV)	Catalog Number	Dimensions (in)	
					A	B
15 (15.5)	61 (99)	205	110	GS1561	10	18 3/4
	100 (164)			GS1510		
23 (27)	61 (99)	208	150	GS2361	14	22 3/4
	100 (164)			GS2310		
34.5 (38)	61 (99)	210	200	GS3461	18	26 3/4
	100 (164)			GS3410		
46 (48.3)	61 (99)	214	250	GS4661	22	30 3/4
	100 (164)			GS4610		
	120 (195)			GS4612		
69 (72.5)	61 (99)	216	350	GS6961	30	38 3/4
	100 (164)			GS6910		
	120 (195)			GS6912		
115 (123)	61 (99)	286	550	GS11561	45	58 1/2
	100 (164)			GS11510		
	120 (195)			GS11512		
138 (145)	61 (99)	288	650	GS13861	54	67 1/2
	100 (164)			GS13810		
	120 (195)			GS13812		
161 (170)	61 (99)	291	750	GS16161	62	75 1/2
	100 (164)			GS16110		
	120 (195)			GS16112		
230 (245)	61 (99)	304	900	GS23061	80	95 1/2
				GS23010		
	100 (164)	312	1050	GS23012	92	105 1/2
				GS23061Z		
				GS23010Z		
120 (195)	GS23012Z					
345 (362)	61 (99)	324	1300	GS34561	106	121 1/2
	100 (164)			GS34510		
	120 (195)			GS34512		

#### NOTES:

1. All dimensions & part numbers listed are for stand-alone parallel grounding switches and are for reference only. Consult factory for design dimensions.
2. Consult factory for configurations not listed or shown.
3. 120kA grounding switch illustrated above.